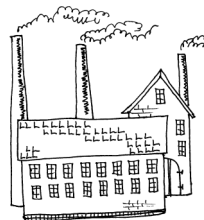
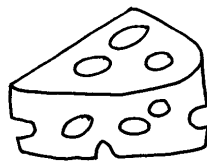
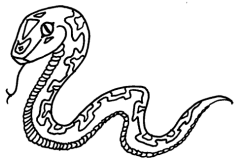
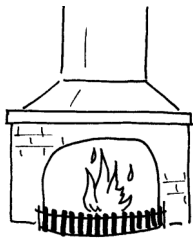


Tegn en ring omkring 7 ord der starter med S



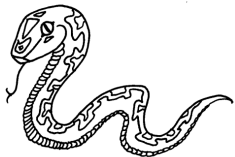
Sæt streg under vokalerne

A E I O U Y Æ Ø Å



STJER-NE

SKØJ-TE



SLAN-GE

SOL-DAT



STRØM-PE



SVA-NE



SØ-HEST

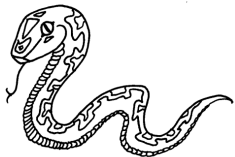


Skriv den manglende vokal.

A E I O U Y Æ Ø Å



STJ_RNE



SL_NGE



STR_MPE



S_HEST



SK_JTE



S_LDAT

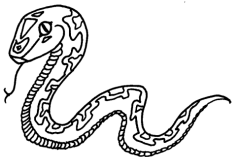


SV_NE



STJ_RN_

SK_JT_



SL_NG_

S_LD_T



STR_MP_

SV_N_



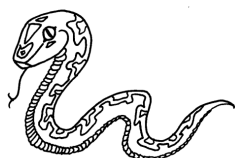
S_H_ST



Skriv bogstavet ordet ender på.



STJERN _



SLANG _



STRØMP _



SØHES _



SKØJT _



SOLDA _

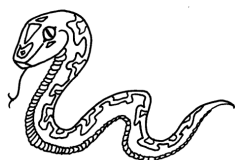


SVAN _

Skriv den manglende konsonant.



STJE_NE



SKØ_TE



SLA_GE

SOL_AT



STRØ_PE

S_ANE

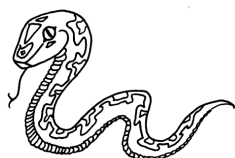


SØ_EST

Skriv de 2 manglende konsonanter.



S _ J E R _ E



S _ Ø J _ E



S _ A N _ E

S O _ D A _



S T _ Ø M _ E

S _ A _ E



S Ø _ E _ T

Ord pusle - træk streger mellem stavelserne - dan ordet



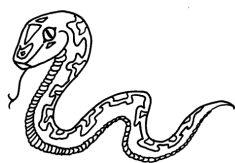
SLAN

TE



SØ

GE



SKØJ

DAT

STJER

PE



SVA

NE



STRØM

HEST



SOL

NE

